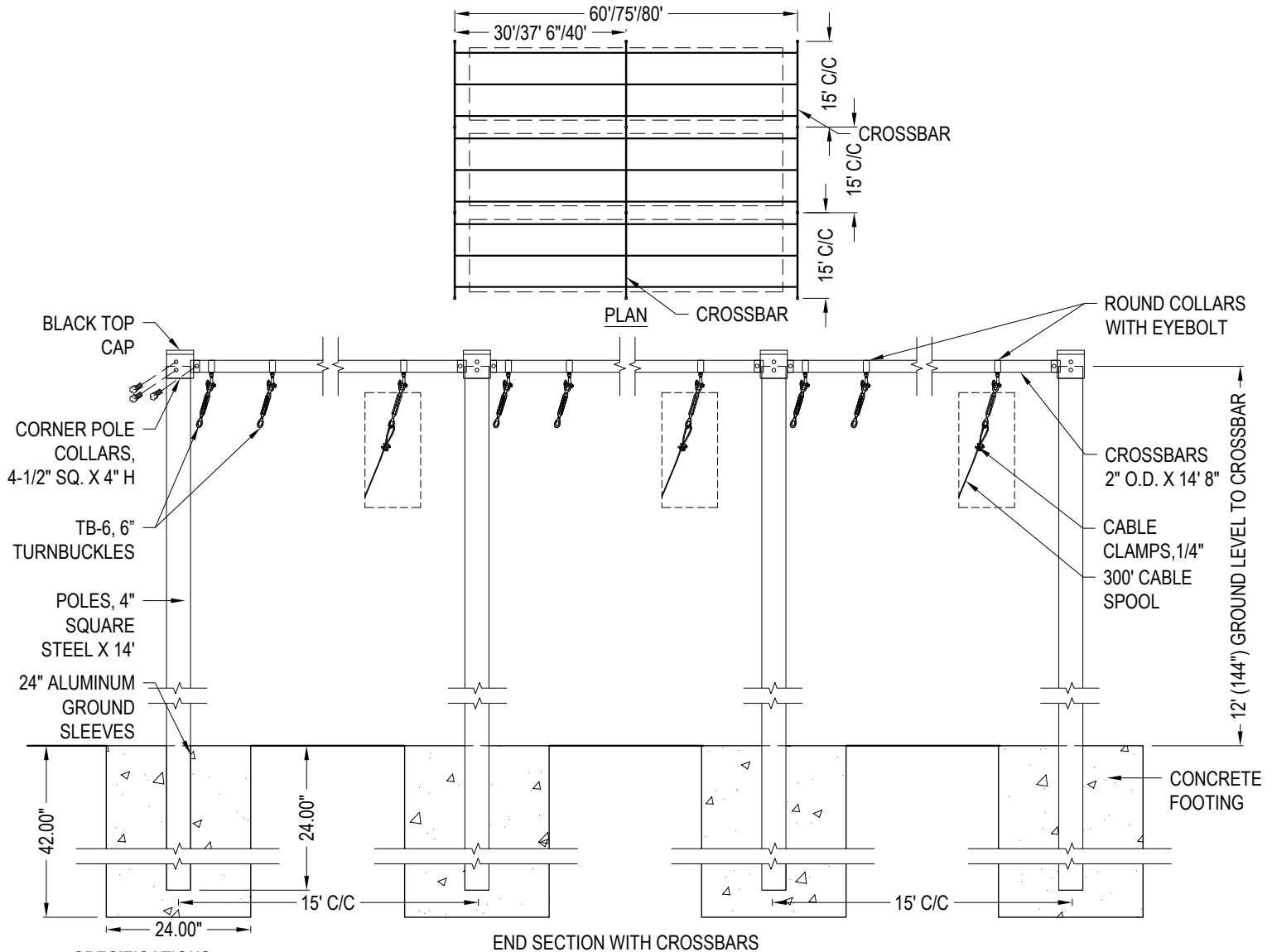




DOUGLAS INDUSTRIES, INC.
3441 S 11TH AVE.
ELDRIDGE, IA 52748
TOLL FREE: 1-800-553-8907
www.douglas-sports.com



SPECIFICATIONS:

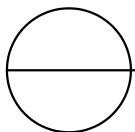
CONSTRUCTION: THIS HEAVY-DUTY FRAME IS CONSTRUCTED USING TEN, 14', 4" SQUARE, HEAVY-DUTY STEEL POLES.

FINISH: A BLACK, BAKED ON POWDER COAT FINISH ON THE STEEL FRAME PROVIDES THE ULTIMATE WEATHER RESISTANCE AND PROTECTION.

WARRANTY: 5-YEAR LIMITED

NOTES:

1. INSTALLATION TO BE COMPLETED IN ACCORDANCE WITH MANUFACTURER'S SPECIFICATIONS.
2. DO NOT SCALE DRAWING.
3. THIS DRAWING IS INTENDED FOR USE BY ARCHITECTS, ENGINEERS, CONTRACTORS, CONSULTANTS AND DESIGN PROFESSIONALS FOR PLANNING PURPOSES ONLY. THIS DRAWING MAY NOT BE USED FOR CONSTRUCTION.
4. ALL INFORMATION CONTAINED HEREIN WAS CURRENT AT THE TIME OF DEVELOPMENT BUT MUST BE REVIEWED AND APPROVED BY THE PRODUCT MANUFACTURER TO BE CONSIDERED ACCURATE.
5. CONTRACTOR'S NOTE: FOR PRODUCT AND COMPANY INFORMATION VISIT www.CADdetails.com/info AND ENTER REFERENCE NUMBER 2763-068.



BATTING TUNNEL FRAMES

DOUGLAS® TRIPLE BATTING TUNNEL FRAME, 60'75"/80' (66216T)