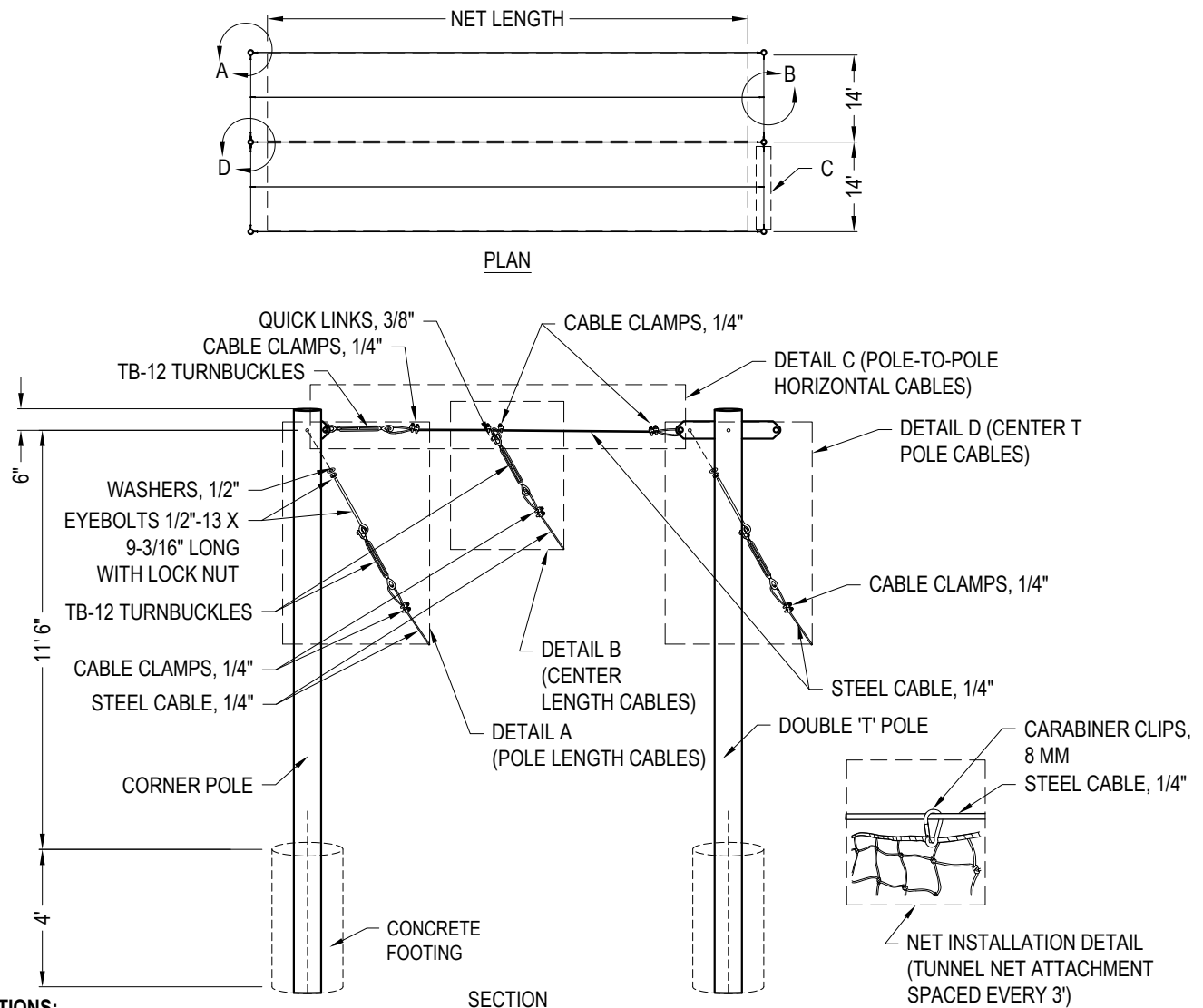




DOUGLAS INDUSTRIES, INC.
3441 S 11TH AVE.
ELDRIDGE, IA 52748
TOLL FREE: 1-800-553-8907
www.douglas-sports.com



SPECIFICATIONS:

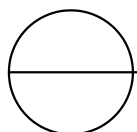
CONSTRUCTION: THE MASSIVE 16' DIRECT BURY, HEAVY-DUTY STEEL POLES ARE CONSTRUCTED FROM 8 5/8" OD WITH A 0.322" WALL THICKNESS. THE TENSION CABLE SUPPORT SYSTEM CONSISTS OF 1/4" GALVANIZED AIRCRAFT CABLE WITH A 6,100 LB BREAK STRENGTH. ALL NET-TO-CABLE CONNECTIONS ARE CONSTRUCTED FROM LONG LASTING STEEL

FINISH: POLES ARE COATED WITH A DURABLE BLACK POWDER COAT FINISH FOR MAXIMUM PROTECTION AND WEATHER RESISTANCE

WARRANTY: 7-YEAR LIMITED

NOTES:

1. INSTALLATION TO BE COMPLETED IN ACCORDANCE WITH MANUFACTURER'S SPECIFICATIONS.
2. DO NOT SCALE DRAWING.
3. THIS DRAWING IS INTENDED FOR USE BY ARCHITECTS, ENGINEERS, CONTRACTORS, CONSULTANTS AND DESIGN PROFESSIONALS FOR PLANNING PURPOSES ONLY. THIS DRAWING MAY NOT BE USED FOR CONSTRUCTION.
4. ALL INFORMATION CONTAINED HEREIN WAS CURRENT AT THE TIME OF DEVELOPMENT BUT MUST BE REVIEWED AND APPROVED BY THE PRODUCT MANUFACTURER TO BE CONSIDERED ACCURATE.
5. CONTRACTOR'S NOTE: FOR PRODUCT AND COMPANY INFORMATION VISIT www.CADdetails.com/info AND ENTER REFERENCE NUMBER 2763-070.



BATTING TUNNEL FRAMES

DOUGLAS® MAX DOUBLE BATTING TUNNEL FRAME, 55'/70'/75' (66470D)