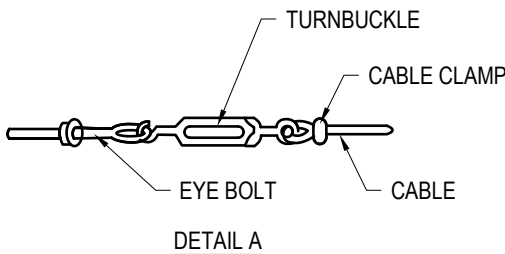
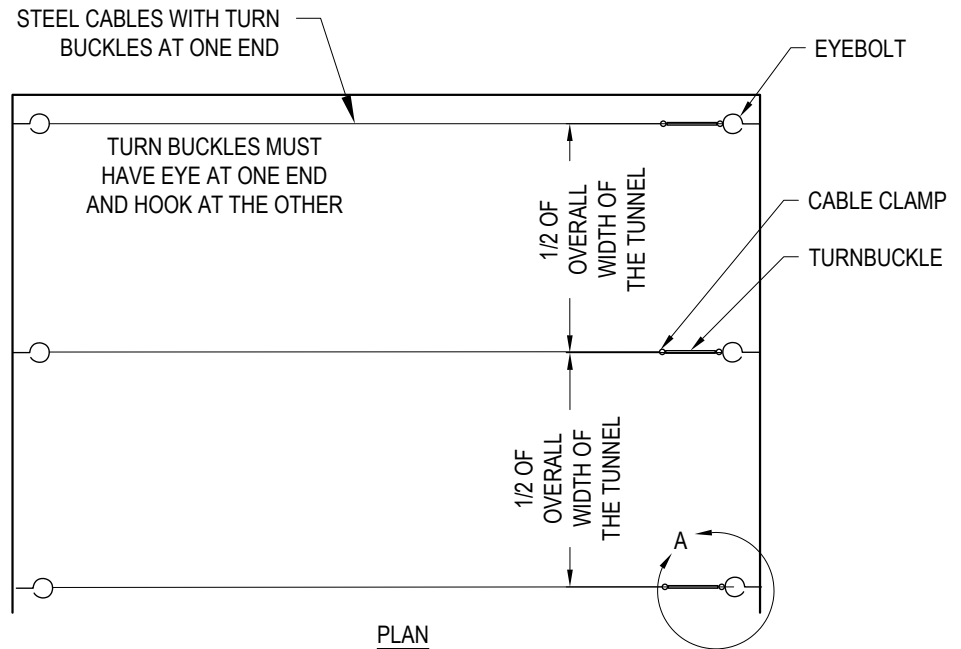


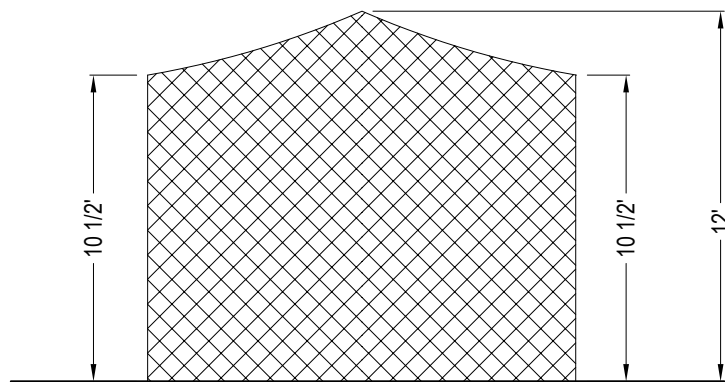


DOUGLAS INDUSTRIES, INC.  
3441 S 11TH AVE.  
ELDRIDGE, IA 52748  
TOLL FREE: 1-800-553-8907  
www.douglas-sports.com



#### ACCESSORY KIT COMPONENTS:

- EYE BOLTS (6)
- 500' CABLE 1/4"
- STEEL C SNAPS (70)
- TURNBUCKLES (6)
- CABLE CLAMPS (12)
- SPLIT BRACKET PULLEYS (70)

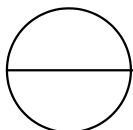


#### MANUFACTURER NOTES

- THE SLOPE OF THE NET IS IMPORTANT. THE CENTER OF THE NET, FOR IT'S ENTIRE LENGTH IS 12' HIGH. THE SIDES OF THE NET ARE ONLY 10 1/2' HIGH, LEAVING 18" OF NET ON YOUR GYM FLOOR TO KEEP BATTED BALLS INSIDE THE ENCLOSED AREA.

#### NOTES:

1. INSTALLATION TO BE COMPLETED IN ACCORDANCE WITH MANUFACTURER'S SPECIFICATIONS.
2. DO NOT SCALE DRAWING.
3. THIS DRAWING IS INTENDED FOR USE BY ARCHITECTS, ENGINEERS, CONTRACTORS, CONSULTANTS AND DESIGN PROFESSIONALS FOR PLANNING PURPOSES ONLY. THIS DRAWING MAY NOT BE USED FOR CONSTRUCTION.
4. ALL INFORMATION CONTAINED HEREIN WAS CURRENT AT THE TIME OF DEVELOPMENT BUT MUST BE REVIEWED AND APPROVED BY THE PRODUCT MANUFACTURER TO BE CONSIDERED ACCURATE.
5. CONTRACTOR'S NOTE: FOR PRODUCT AND COMPANY INFORMATION VISIT [www.CADdetails.com/info](http://www.CADdetails.com/info) AND ENTER REFERENCE NUMBER 2763-075.



## INDOOR BATTING TUNNELS

DOUGLAS® ACCESSORY CABLE HARDWARE KIT (66213)