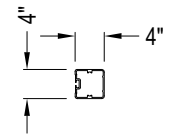
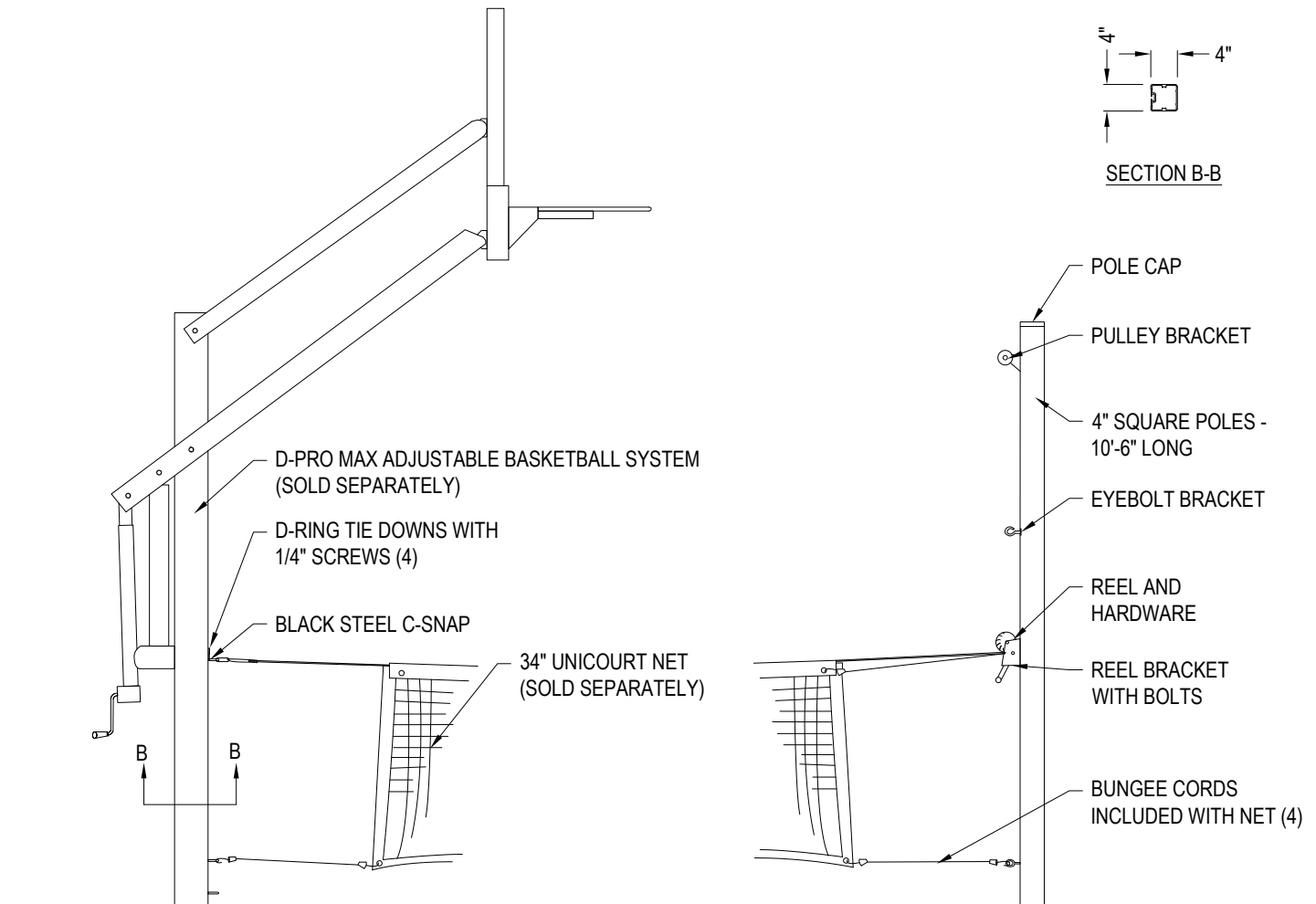




DOUGLAS INDUSTRIES, INC.
3441 S 11TH AVE.
ELDRIDGE, IA 52748
TOLL FREE: 1-800-553-8907
www.douglas-sports.com

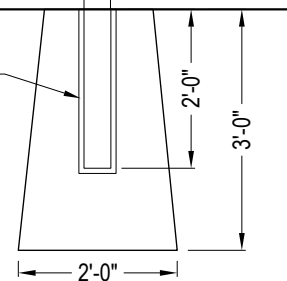


SECTION B-B



SIDE ELEVATION

GROUND SLEEVE
(SGS-24SQ)
(ITEM #65280)
SOLD SEPARATELY
(RECOMMENDED
BUT OPTIONAL)



SPECIFICATIONS

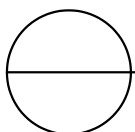
CONSTRUCTION

POLE: 4" SQUARE EXTRUDED ALUMINUM POLE - 100% RUST PROOF

FINISH: ALL COMPONENTS ARE FINISHED WITH A BLACK, POWDER COAT FINISH
- ADJUSTABLE UP TO 8' HIGH

NOTES:

1. INSTALLATION TO BE COMPLETED IN ACCORDANCE WITH MANUFACTURER'S SPECIFICATIONS.
2. DO NOT SCALE DRAWING.
3. THIS DRAWING IS INTENDED FOR USE BY ARCHITECTS, ENGINEERS, CONTRACTORS, CONSULTANTS AND DESIGN PROFESSIONALS FOR PLANNING PURPOSES ONLY. THIS DRAWING MAY NOT BE USED FOR CONSTRUCTION.
4. ALL INFORMATION CONTAINED HEREIN WAS CURRENT AT THE TIME OF DEVELOPMENT BUT MUST BE REVIEWED AND APPROVED BY THE PRODUCT MANUFACTURER TO BE CONSIDERED ACCURATE.
5. CONTRACTOR'S NOTE: FOR PRODUCT AND COMPANY INFORMATION VISIT www.CADdetails.com/info AND ENTER REFERENCE NUMBER 2763-091.



UNICOURT™ EQUIPMENT

ALUMINUM IN-LINE ADJUSTABLE NET SYSTEM (#68253)