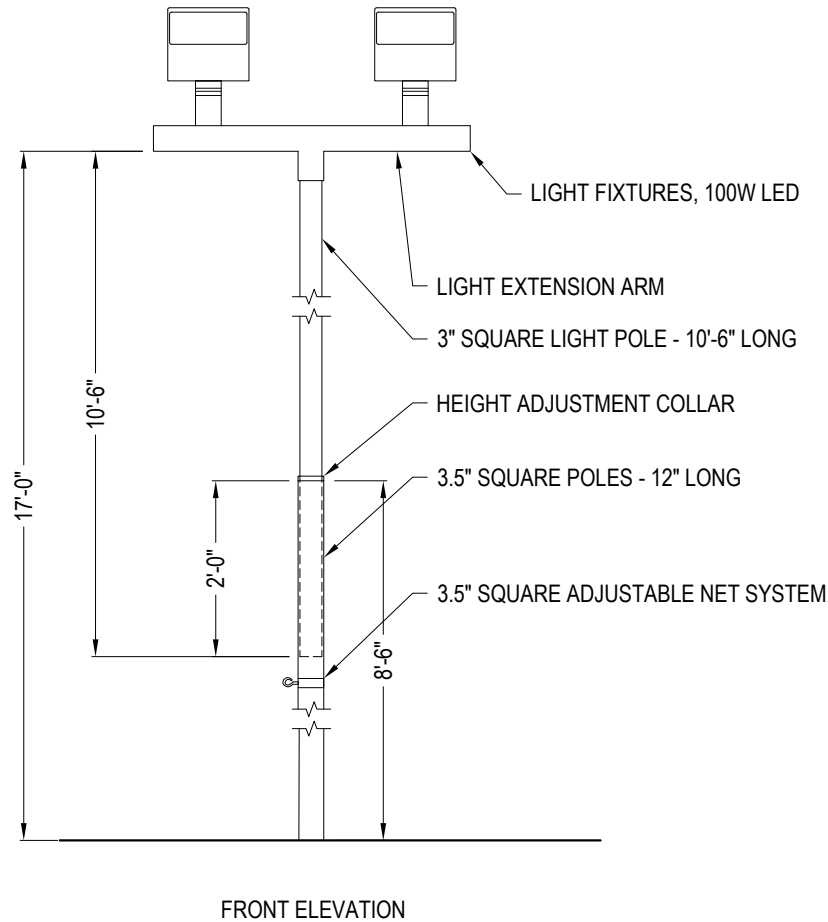




DOUGLAS INDUSTRIES, INC.
3441 S 11TH AVE.
ELDRIDGE, IA 52748
TOLL FREE: 1-800-553-8907
www.douglas-sports.com



SPECIFICATIONS

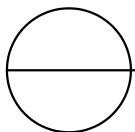
MATERIAL: THE EXTENSION SYSTEM INCLUDES A 3" SQUARE (10'-6" LONG) STEEL LIGHT POLE WITH COLLAR, EXTENSION ARM AND LIGHT FIXTURES WITH LAMPS AND FITS INTO THE TOP OF A STEEL 3.5" SQUARE (12' LONG) ADJUSTABLE NET SYSTEM POLE

LIGHT FIXTURE: 100W LED

WARRANTY: 5 YEAR

NOTES:

1. INSTALLATION TO BE COMPLETED IN ACCORDANCE WITH MANUFACTURER'S SPECIFICATIONS.
2. DO NOT SCALE DRAWING.
3. THIS DRAWING IS INTENDED FOR USE BY ARCHITECTS, ENGINEERS, CONTRACTORS, CONSULTANTS AND DESIGN PROFESSIONALS FOR PLANNING PURPOSES ONLY. THIS DRAWING MAY NOT BE USED FOR CONSTRUCTION.
4. ALL INFORMATION CONTAINED HEREIN WAS CURRENT AT THE TIME OF DEVELOPMENT BUT MUST BE REVIEWED AND APPROVED BY THE PRODUCT MANUFACTURER TO BE CONSIDERED ACCURATE.
5. CONTRACTOR'S NOTE: FOR PRODUCT AND COMPANY INFORMATION VISIT www.CADdetails.com/info AND ENTER REFERENCE NUMBER 2763-093.



UNICOURT™ EQUIPMENT

IN-LINE LIGHT SYSTEM ADD-ON (#68513)