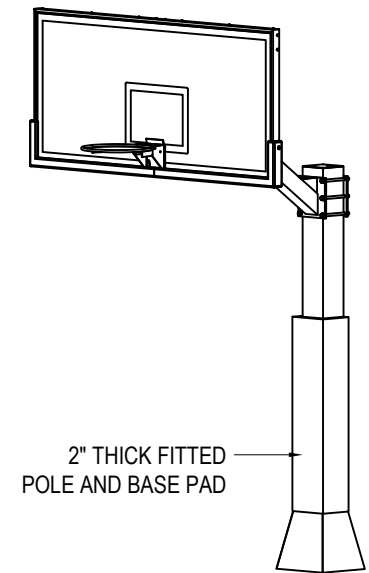
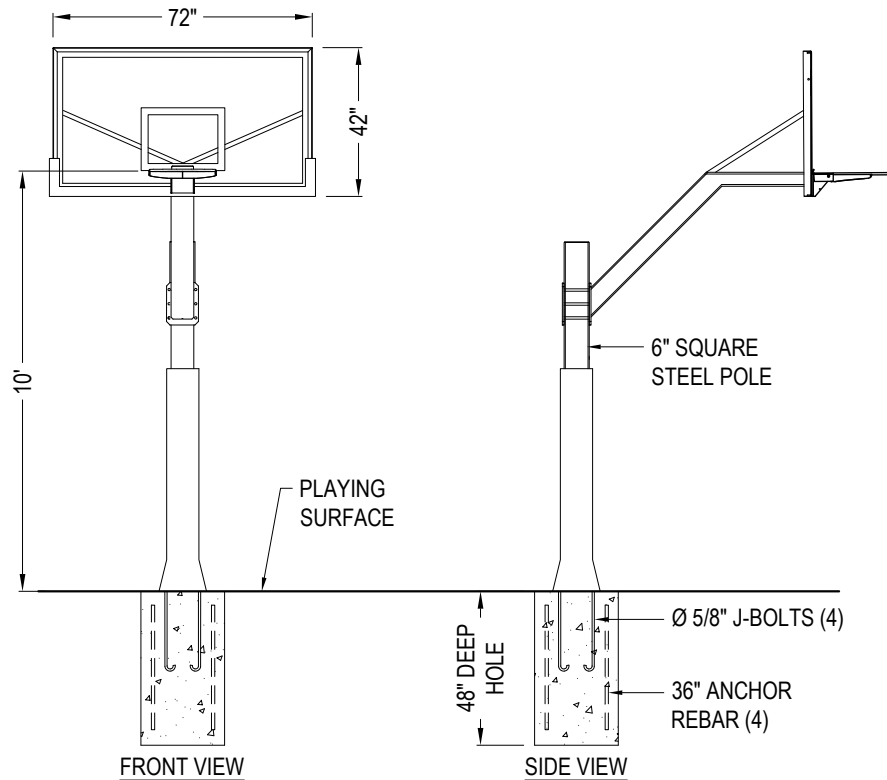




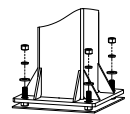
DOUGLAS INDUSTRIES, INC.  
3441 S 11TH AVE.  
ELDRIDGE, IA 52748  
TOLL FREE: 1-800-553-8907  
[www.douglas-sports.com](http://www.douglas-sports.com)

☒ SELECT DESIRED BACKBOARD MATERIAL:

- |  |  |
|--|--|
| <input type="checkbox"/> CLEARVIEW POLYCARBONATE 42" X 60" (69562) | <input type="checkbox"/> CLEARVIEW POLYCARBONATE 42" X 72" (69574) (SHOWN) |
| <input type="checkbox"/> TEMPERED GLASS 42" X 60" (69560)          | <input type="checkbox"/> TEMPERED GLASS 42" X 72" (69572)                  |
| <input type="checkbox"/> 42" X 60" STEEL BACKBOARD (69565)         |  |



PERSPECTIVE VIEW



INSTALLATION VIEW  
MAIN POST ON J-BOLTS

**SPECIFICATIONS  
CONSTRUCTION**

**RIM:** 5/8" THICK, 18" STEEL RIM, DOUBLE SPRING PRESSURE FLEX BREAKAWAY MECHANISM

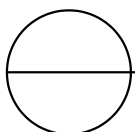
**EXTENSION ARM:** CORROSION RESISTANT 5" X 5" ARM

**POLE:** 6" SQUARE 3/16" WALL THICK GALVANIZED STEEL POLE, 2" THICK FITTED POLE BASE AND BASE PAD

**WARRANTY:** LIFETIME

**NOTES:**

1. INSTALLATION TO BE COMPLETED IN ACCORDANCE WITH MANUFACTURER'S SPECIFICATIONS.
2. DO NOT SCALE DRAWING.
3. THIS DRAWING IS INTENDED FOR USE BY ARCHITECTS, ENGINEERS, CONTRACTORS, CONSULTANTS AND DESIGN PROFESSIONALS FOR PLANNING PURPOSES ONLY. THIS DRAWING MAY NOT BE USED FOR CONSTRUCTION.
4. ALL INFORMATION CONTAINED HEREIN WAS CURRENT AT THE TIME OF DEVELOPMENT BUT MUST BE REVIEWED AND APPROVED BY THE PRODUCT MANUFACTURER TO BE CONSIDERED ACCURATE.
5. CONTRACTOR'S NOTE: FOR PRODUCT AND COMPANY INFORMATION VISIT [www.CADdetails.com/info](http://www.CADdetails.com/info) AND ENTER REFERENCE NUMBER 2763-101.



**BASKETBALL EQUIPMENT**

DOUGLAS® F5™ BASKETBALL SYSTEM