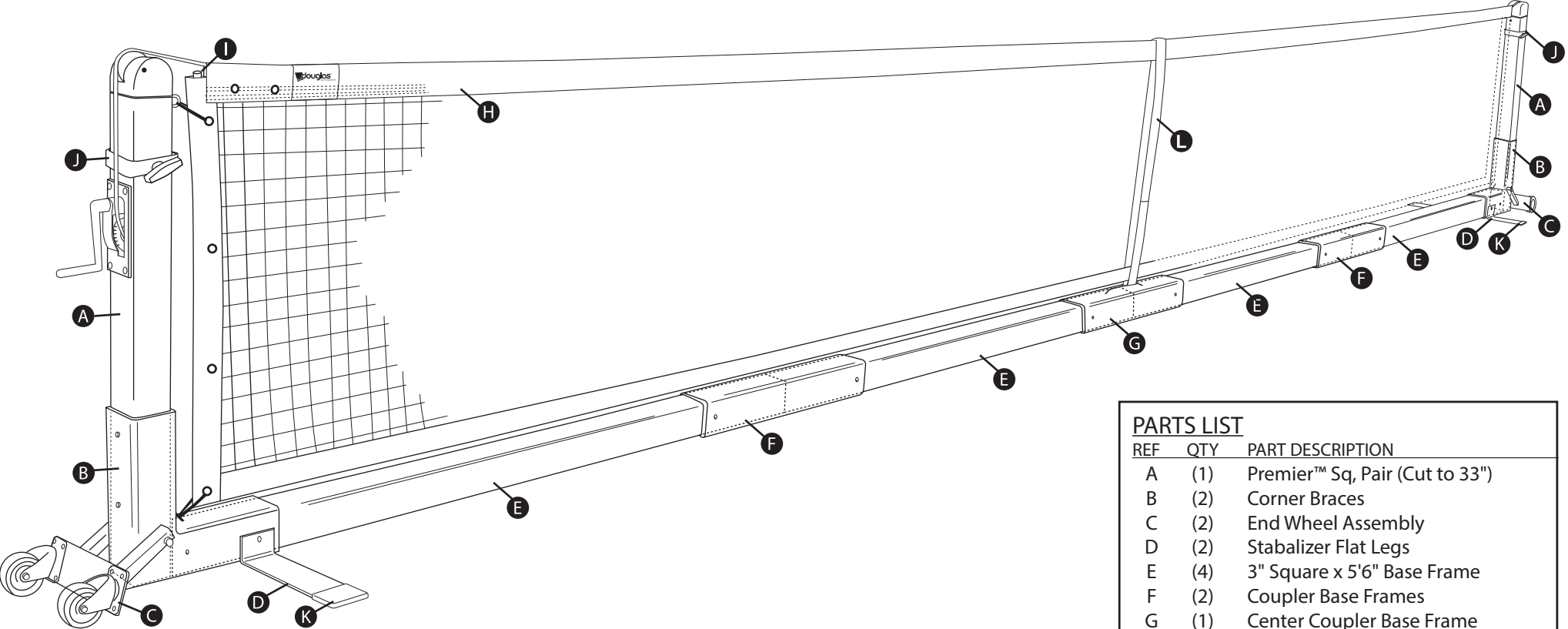


Douglas® PPS-22SQ  
Premier™ Portable Pickleball, 3' x 22'

Item # 63122



PARTS LIST

REF	QTY	PART DESCRIPTION
A	(1)	Premier™ Sq, Pair (Cut to 33")
B	(2)	Corner Braces
C	(2)	End Wheel Assembly
D	(2)	Stabalizer Flat Legs
E	(4)	3" Square x 5'6" Base Frame
F	(2)	Coupler Base Frames
G	(1)	Center Coupler Base Frame
H	(1)	PN-30 Pickleball Net (31" x 21'9")
I	(2)	Dowels
J	(2)	Lift Assist Handles
K	(4)	Rubber End Grips

Hardware Bag:

L	(1)	Velcro Center Strap
	(6)	Extra Screws
	(6)	Tie Wraps
	(1)	3/16" Allen Wrench (for Set Screws)

Inside Take-up Post:

	(1)	Hardware Handle
	(4)	Eyebolts

TOOLS NEEDED (NOT PROVIDED)

- 9/16 Wrench or Socket
- Tape Measure
- Bolt Cutter
- Tape
- Gloves
- 3/16" Allen Bit in a Driver  
(Instead of using the provided Allen wrench)

# Douglas® PPS-22SQ

## Premier™ Portable Pickleball, 3' x 22'

Item # 63122

### FRAME INSTALLATION

#### STEP 1

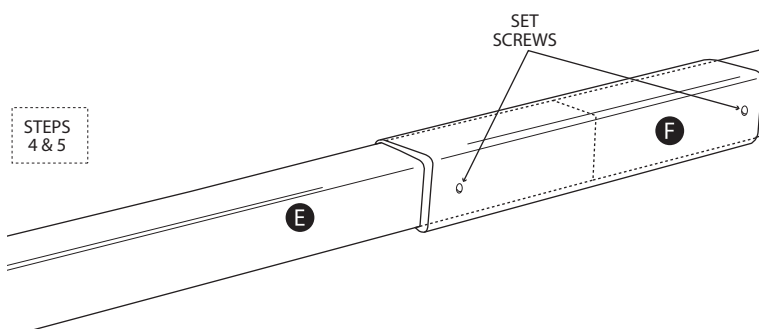
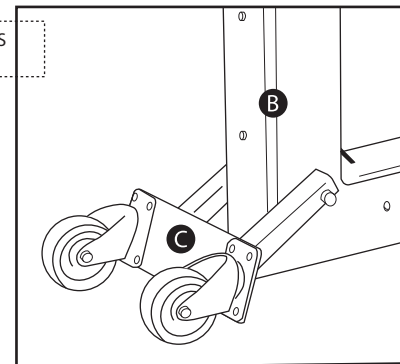
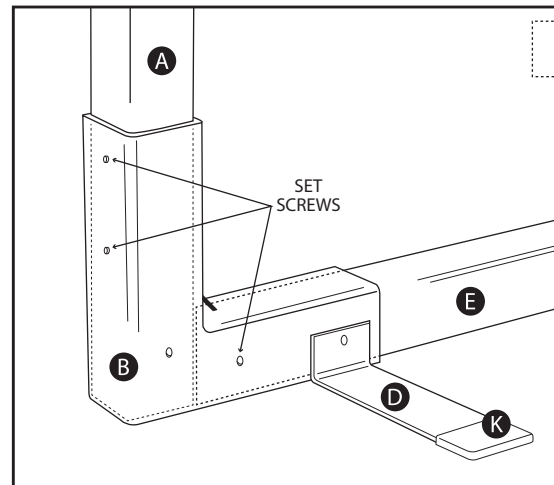
Lay out all parts as shown in the drawing; start by attaching the stabilizer legs (Ref. D) to the corner braces (Ref. B)

#### STEP 2

Insert the vertical end posts (Ref. A) into the corner braces (Ref. B). The vertical end posts should drop all the way to ground level inside the corner brace.

#### STEP 3

Attach and secure wheel assemblies (Ref. C) to the corner braces with a 9/16 wrench.



#### STEP 4

Assemble the bottom frame by sliding together all (4) bottom frame pieces (Ref. E) using coupler pieces (Ref. F & G) in the layout as shown in the drawing. There should be no gaps between the bottom pieces. The full length should be 22' once assembled. (Measurement is taken Inside-of-post to Inside-of-post)

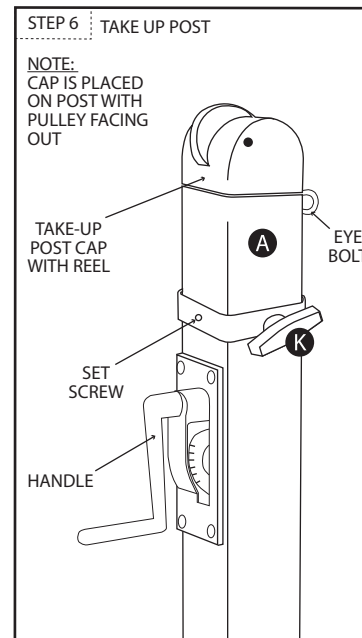
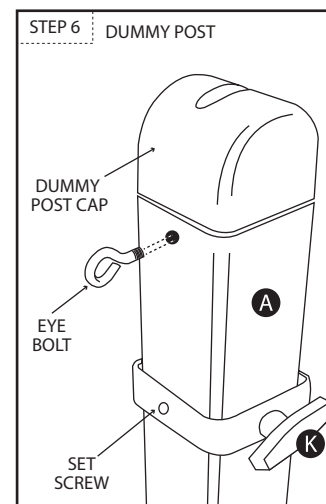
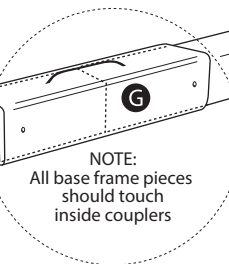
#### STEP 5

Tighten all pre-attached set screws with the provided Allen wrench to secure the framework into place. (Extra set screws are included in the hardware bag in case any are missing from the frame.)

#### STEP 6

Slide the lift assist handles (Ref. K) over each post about 3" down from the post caps. Tighten the pre-attached set screws on the handle sleeve with the provided Allen wrench. Handles should be on the sides of the pickleball posts. Screw the (2) provided eyebolts into the threaded hole at the top of each vertical post.

**NOTE:** The eyebolts and handle are located in a bag inside the take-up post. **\*\***(2) extra eyebolts are included.



# Douglas® PPS-22SQ

## Premier™ Portable Pickleball, 3' x 22'

Item # 63122

### NET INSTALLATION:

#### STEP 1

Attach the "Loop" end of the cable to the hook on the dummy post.

**NOTE:** Hold the cable's opposite "cut end" so it does not get pulled into the net headband.

#### STEP 2

On the take-up post, bring the cable over the pulley on top of the post, down the side, and insert the cut end into the gear hole. Use the provided chrome handle to start cranking the net up.

#### STEP 3

Insert provided dowels (Ref. I) through the end side tapes of the net.

#### STEP 4

Use (4) total Tie Raps to attach the top of the net to the eyebolts and the bottom of the net to the corner bars on the bottom of the frame.

**NOTE:** Optional lacing cord is provided instead of tie raps if desired.

#### STEP 5

Install the center strap over the net and secure it to the Center Coupler (Ref. G).

**NOTE:** The chrome loop snap is preinstalled on the strap, but it should be removed prior to installation, as attaching directly to the coupler looks cleaner. Adjust the strap so that the center of the net sits at 34".

